

# Welcome to the Spectral Serpent Moon of Liberation! This is the eleventh moon of the Planetary Service Wavespell.

Our life moves in the direction of our most dominant thoughts. Getting caught up in the world of disputes and dramas entangles us in the symptoms of the world rather than directing our energy within to listen again for a new understanding.

The Spectral Moon calls on us to dissolve and transmute lower emotions into higher states of being and action.

Blocked emotional energy keeps us from accessing higher states of consciousness. Emotions are fluctuating energy patterns. Emotional energy is the subtle energy that is transduced from our fourth-dimensional body to our third-dimensional body. This energy operates through our seven chakras, the emotional centers of the body.

When we ask for "emotional support" we are asking for support of our subtle energies that we each must process through our chakra system. To balance our emotional energy is to balance our chakra system and realign our energy with the new beam frequency.

The Spectral Moon reminds us that impermanence is instantaneous, so it is wise to remember how precious life really is.

In this Planetary Wizard year, we have had the passing of two prominent artists: David Bowie and Prince, who passed away 100 days apart.

Bowie was [Blue Electric Eagle, Kin 55](#), signature of the Harmonic Convergence. Prince was [Yellow Galactic Sun, Kin 60](#), signature of Pacal Votan. Both were born in the [Skywalker wavespell](#) of prophecy.

The totem for this moon is the Serpent. The 13th sign of the zodiac, Ophiuchus - "the serpent bearer", is positioned northwest of the center of the Milky Way, opposite Orion.

In the [pulsar](#) cosmology of the wavespell, the eleventh position or tone completes the second dimension sense pulsar that began in the third moon, the Electric Moon of Service.

In this 11th position we dissolve and liberate all thought-forms that do not serve the highest good. Remember that living with paradox is a stage in the process of our own self-transcendence

Tone 11 is aligned with the Totem of Serpent. "The snake dwells in so many places, climates and environments, comes in so many colors, shapes and sizes that this creature can be said to be one of the most versatile of all. Indeed snakes represent versatility, transmutation and change, their natural inclination to 'shed their skins' leaving behind the old, and adapting to the new, supports this idea."

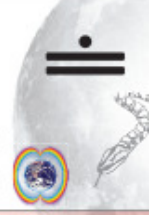
Where Tone 10 asked us to focalize our manifestations, Tone 11 now invites us to let go and release into the full spectrum of possibilities! The Spectral Tone invites us to open to the full range of opportunities, like the Rainbow Serpent, embracing the full spectrum of life!

Tone 11 is the essential energy of liberation that comes after manifestation in Tone 10, and before we crystallize into a higher order in Tone 12. As Jose Arguelles wrote in *Mayan Factor*: "11 represents the dynamic of dissonance accounting for randomness and non-stability." The teaching of Tone 11 is let go of rigidity and embrace chaos, dissolution, and release from structure. We are invited to release allegiance to limitations, reliance upon format, and fixation upon control.

This Moon cycle is the time to free up energy, to break routines, to let go and shed what no longer serves, and to let energy travel through all parts of our lives. Let us welcome a new 28-day cycle to learn from and grow within, together! As we continue evolving and awakening, everything is possible!

ELEVENTH MOON  
 MAY 2 - MAY 29, 2016  
 TOTEM ANIMAL: SERPENT  
 HOW DO I RELEASE AND LET GO?

# SPECTRAL MOON



	DALI SUN	SELI MON	GAMMA TUE	HALI WED	ALPHA THU	LIMI FRI	SILIO SAT
1	2	3	4	5	6	7	
8	9	10	11	12	13	14	
15	16	17	18	19	20	21	
22	23	24	25	26	27	28	

In the 52-week journey through the 52 heptad paths of the Hunab Ku 21 Galactic Tree and Life and Knowledge, the following heptad paths are activated for the Spectral Moon:

### Red Week 1 - Initiate

Heptad 41: **Sex** spectralizes **vision**.  
 (Spectral Moon Dali 1 - Silio 7 / May 2-8)

### White Week 2 - Refine

Heptad 42: **Death** spectralizes **art**.  
 (Spectral Moon Dali 8 - Silio 14 / May 9-15)

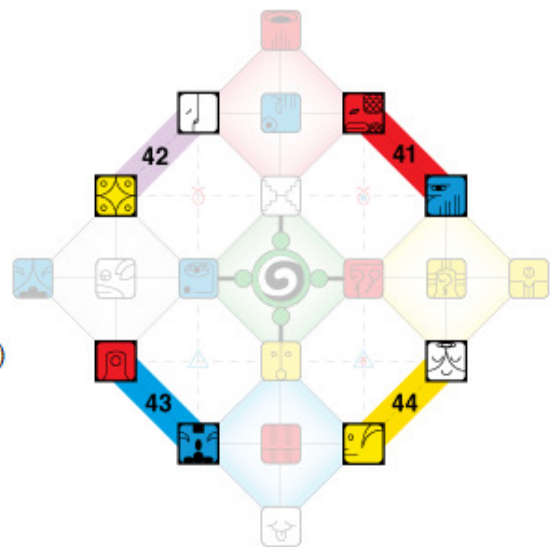
### Blue Week 3 - Transform

Heptad 43: **Purification** spectralizes **magic**.  
 (Spectral Moon Dali 15 - Silio 21 / May 16-22)

### Yellow Week 4 - Ripen

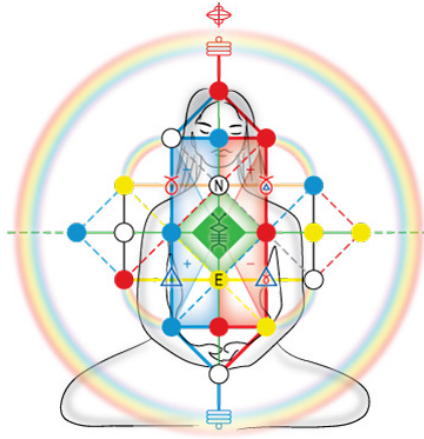
Heptad 44: **Wisdom** spectralizes **timelessness**. (Spectral Moon Dali 22 - Silio 28 / May 23-29)

## HUNAB KU 21 GALACTIC TREE OF LIFE & KNOWLEDGE



SHOWING HEPTAD PATHS 41-44

In the [Galactic Superstructure/the Hunab Ku 21](#), the four heptads of the Spectral Moon - taken as a whole - are the place *in time* where is attained the "electro-etheric form". Notice that these correspond to the four rainbow paths around the outer edges of the image shown below...






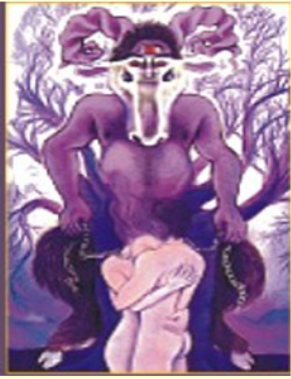
**11th Moon of the year of the White Planetary Wizard-Spectral Moon of Liberation. How can I dissolve and let go.**

In relation to the service wavespell of the year, that of the Red Magnetic Serpent, attracting the power of Life Force, and to the wavespell of the Blue Magnetic Eagle, attracting the power of Vision, this **11<sup>th</sup> Moon** relates to the 11<sup>th</sup> step of the wavespells and dissoles through the energies of **the Blue Spectral Eagle, kin 115, and the Red Spectral Serpent, kin 245**

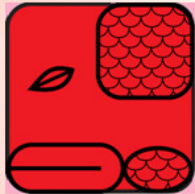
We can envision how to release our vital force and sexuality with creativity through the Eagle and the Serpent that in this moon connect us deeply with the purpose of the year and its polarity and with the totem animal. We will be supported in this task by the awareness of the Seed and the power of atemporality of the Wizard.

In Aura-Soma these codes relate to Equilibrium 15, Service in the New Aeon, Equilibrium 5, the Sunlight Sunset Bottle and Equilibrium 11, The Essene Bottle 1. In order to be of service and heal we need first to look and integrate our shadows; to release our kundalini energy we need to know our body and use its energy with wisdom. To dissolve and break we need clarity and love. We will connect to the Galactic Archetypes of the Seer and the Initiate and the outward path of the Devil and the Hierophant in the Tarots..

In this Moon the planetary influences are Jupiter, Maldek and Saturn so again there is a connection to the first experiments in the galaxy so that we may let them go and dissolve their karmic influence.

<u>Kin 15 Blue Eagle</u>	<u>B 15 Service in The New Aeon</u>
	
<u>Archetype: The Seer</u> <u>Tarot Card: The Devil</u>	
	
<small>BMU 282</small>	

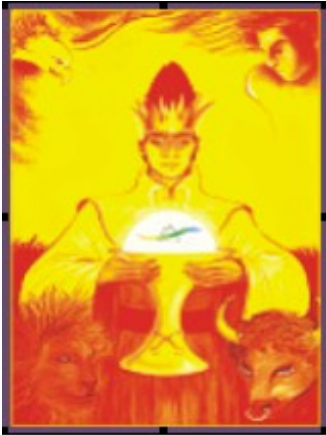
Kin 5 Red Serpent



B5 The Sunrise Sunset Bottle



BMU 288  
The Initiate



The Hierophant